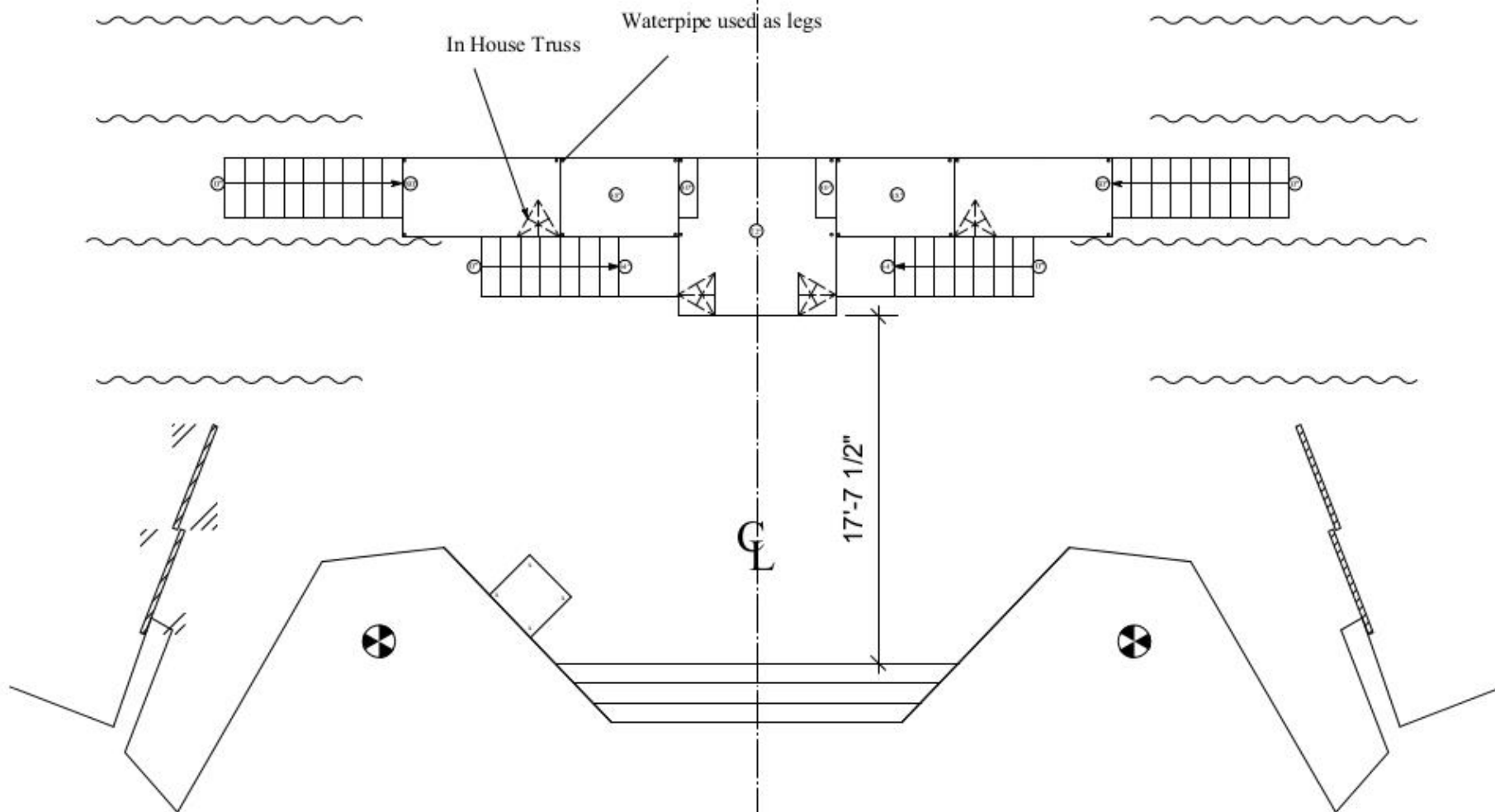


CYC



Notes:

Final pit location and dimensions TBD
Both truss and waterpipe in house
Final placement of legs TBD

Working

ICC Theatre Department

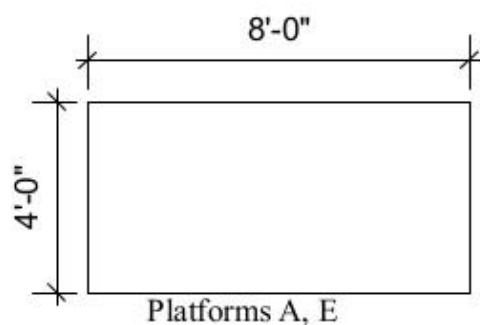
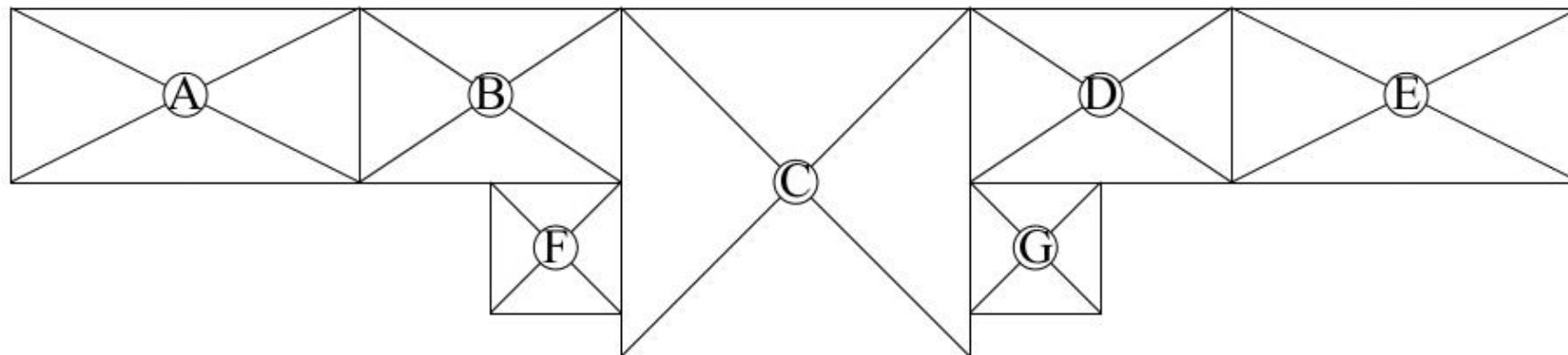
Marty Savolskis, Designer

Ground Plan

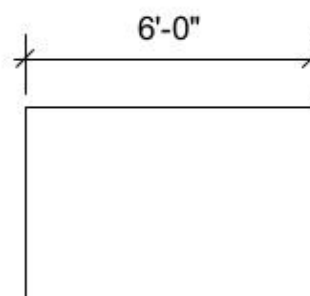
Rob Fulton, Draftsman

1 of 7

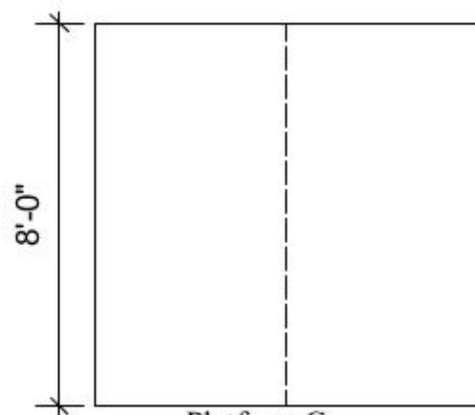
Scale: 1/8" = 1' - 0" Date: 1/9/13



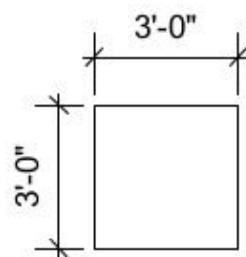
Platforms A, E



Platforms B&D



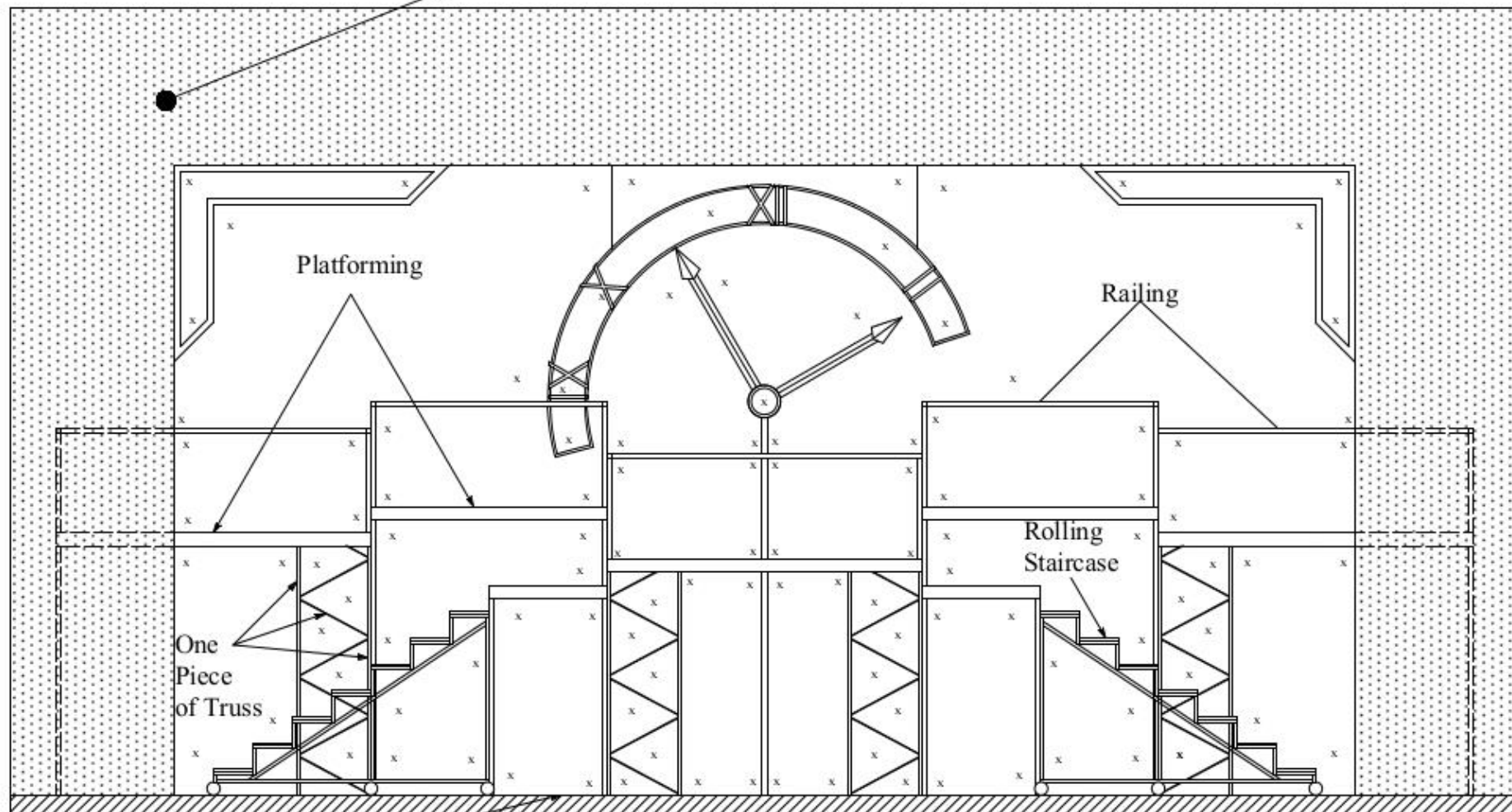
Platform C



Platforms F&G

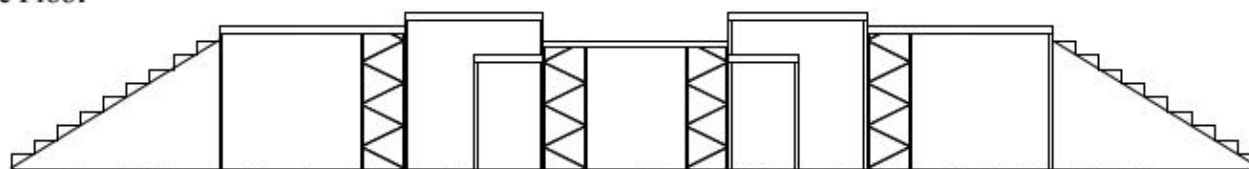
<i>Working</i>	
ICC Theatre Department	
Marty Savolskis, Designer	Platform Layout 2 of 7
Rob Fulton, Draftsman	
Scale: 1/4" = 1' - 0" Date: 1/9/13	

Picture Frame
Drafted for convenience NOT a false Pro



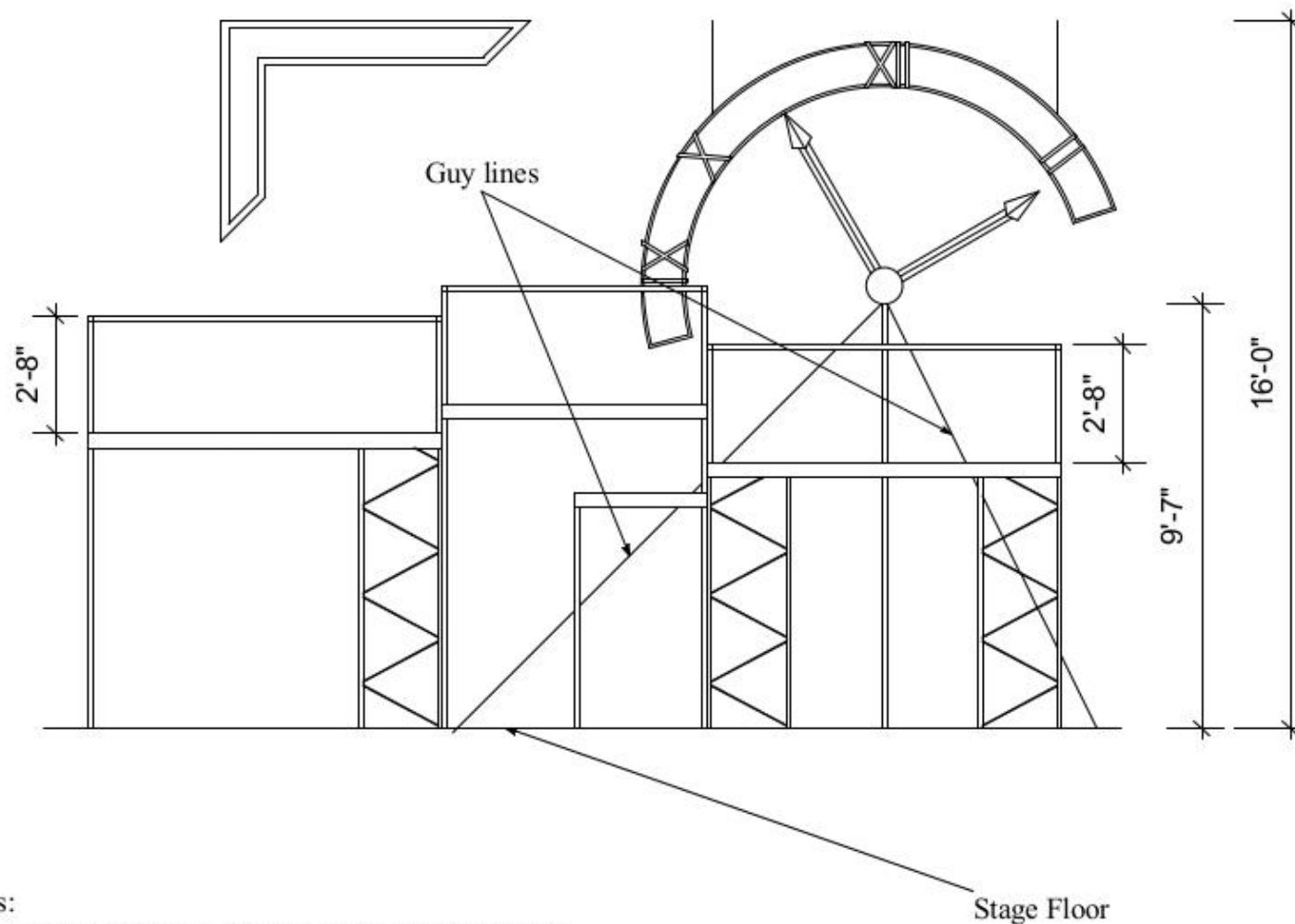
Notes:
Drafted Roman numersal are place holders

Stage Floor



Front View without rolling staircases or railing. NOT DRAWN TO ANY SCALE

Working	
ICC Theatre Department	
Marty Savolskis, Designer	Front View
Rob Fulton, Draftsman	3 of 7
Scale: 1/4" = 1' - 0" Date: 1/9/13	



Notes:

For Clock and Chevron dimensioning see detail plate.

For Platform height see ground plan.

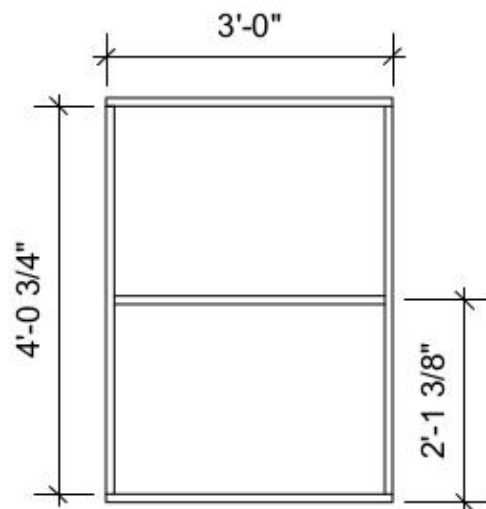
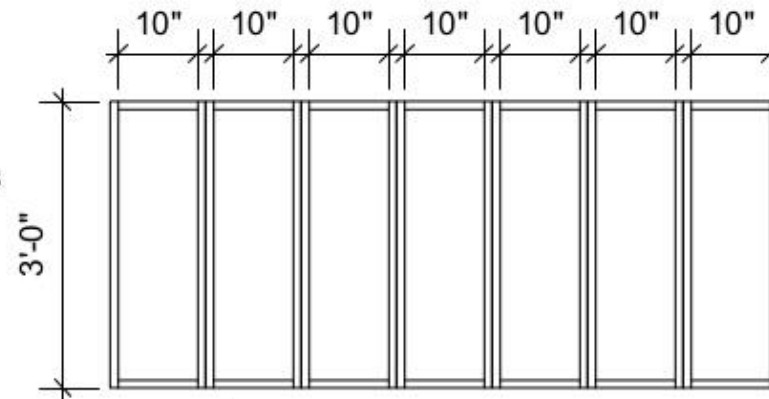
Placement of guy lines for upstage pole TBD.

Chevons and Clock suspended with aircraft cable

Final height of Clock TBD by Designer

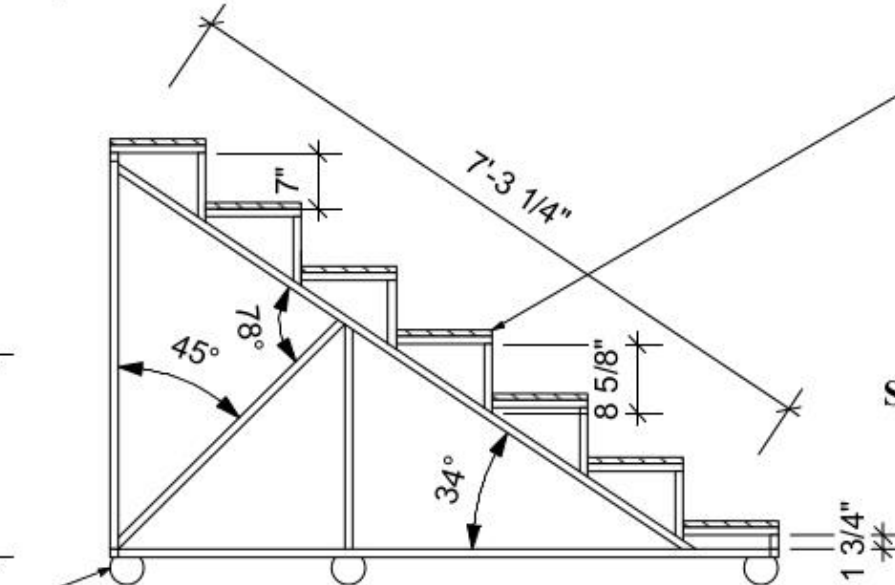
<i>Working</i>	
ICC Theatre Department	
Marty Savolskis, Designer	Front View Simple 4 of 7
Rob Fulton, Draftsman	
Scale: 1/4" = 1' - 0" Date: 1/9/13	

Top View without Lids



Back View

Casters



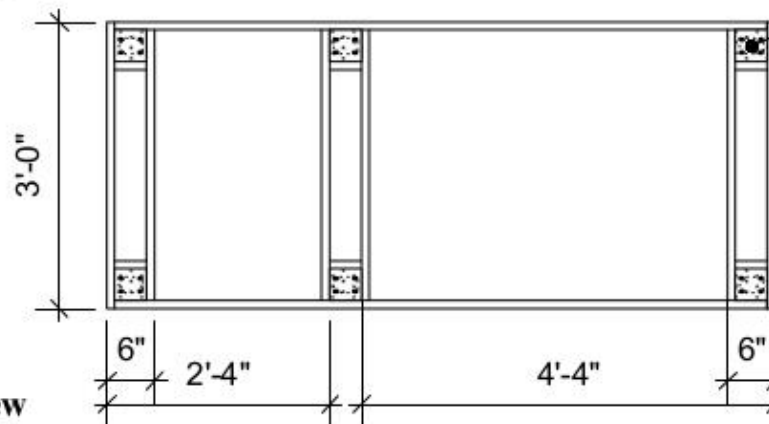
Side View

3/4 ply lid

1/4" plate
flush with
top of 1" box steel

Notes:
Make two
Use Infiniti 3X1 1/4 casters

Bottom View



Working

ICC Theatre Department

Marty Savolskis, Designer

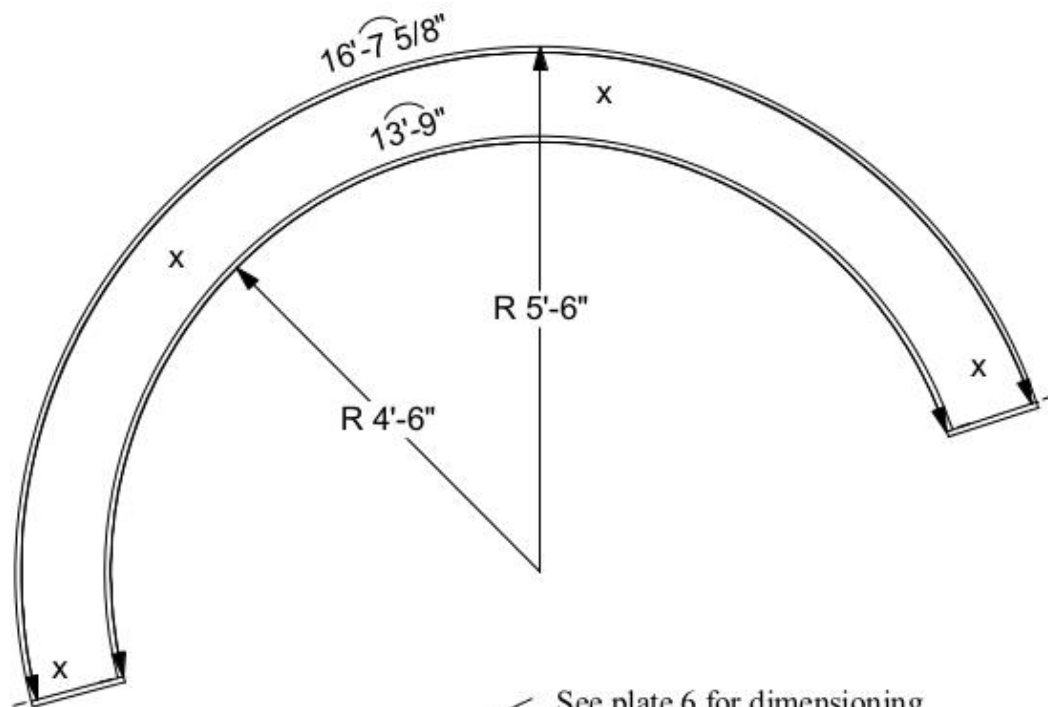
Staircases

Rob Fulton, Draftsman

5 of 7

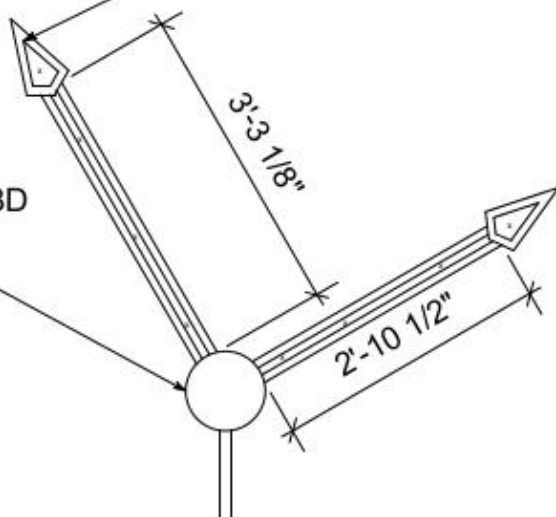
Scale:

Date: 1/9/13

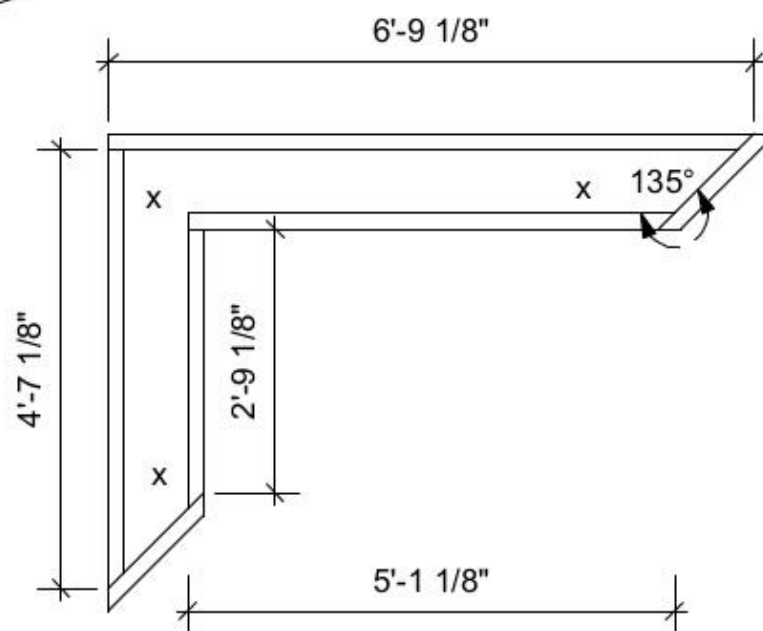


See plate 6 for dimensioning

This object TBD



Notes:
Attachment of clock arms TBD
The chevron is reverse and repeat



Working

ICC Theatre Department

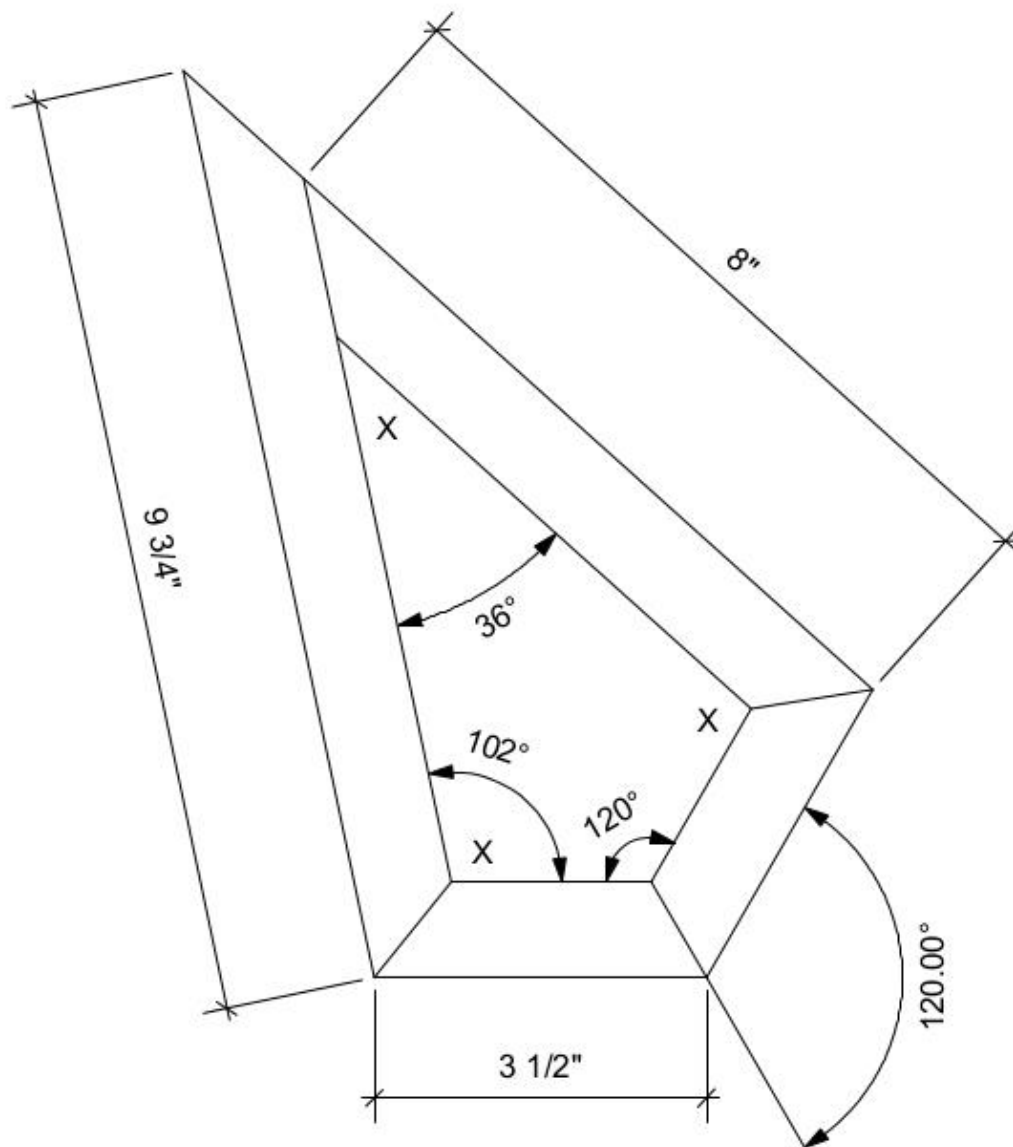
Marty Savolskis, Designer

Clock &
Chevron

Rob Fulton, Draftsman

6 of 7

Scale: 1/2" = 1' - 0" Date: 1/9/13



<i>Working</i>	
ICC Theatre Department	
Marty Savolskis, Designer	Arrowhead 7 of 7
Rob Fulton, Draftsman	
Scale: 6" = 1' - 0" Date: 1/9/13	