

Notes

-Final Trim height To be Determined by Designer
Electrics trimmed to pipe. Boarders trimmed to bottom of curtain.

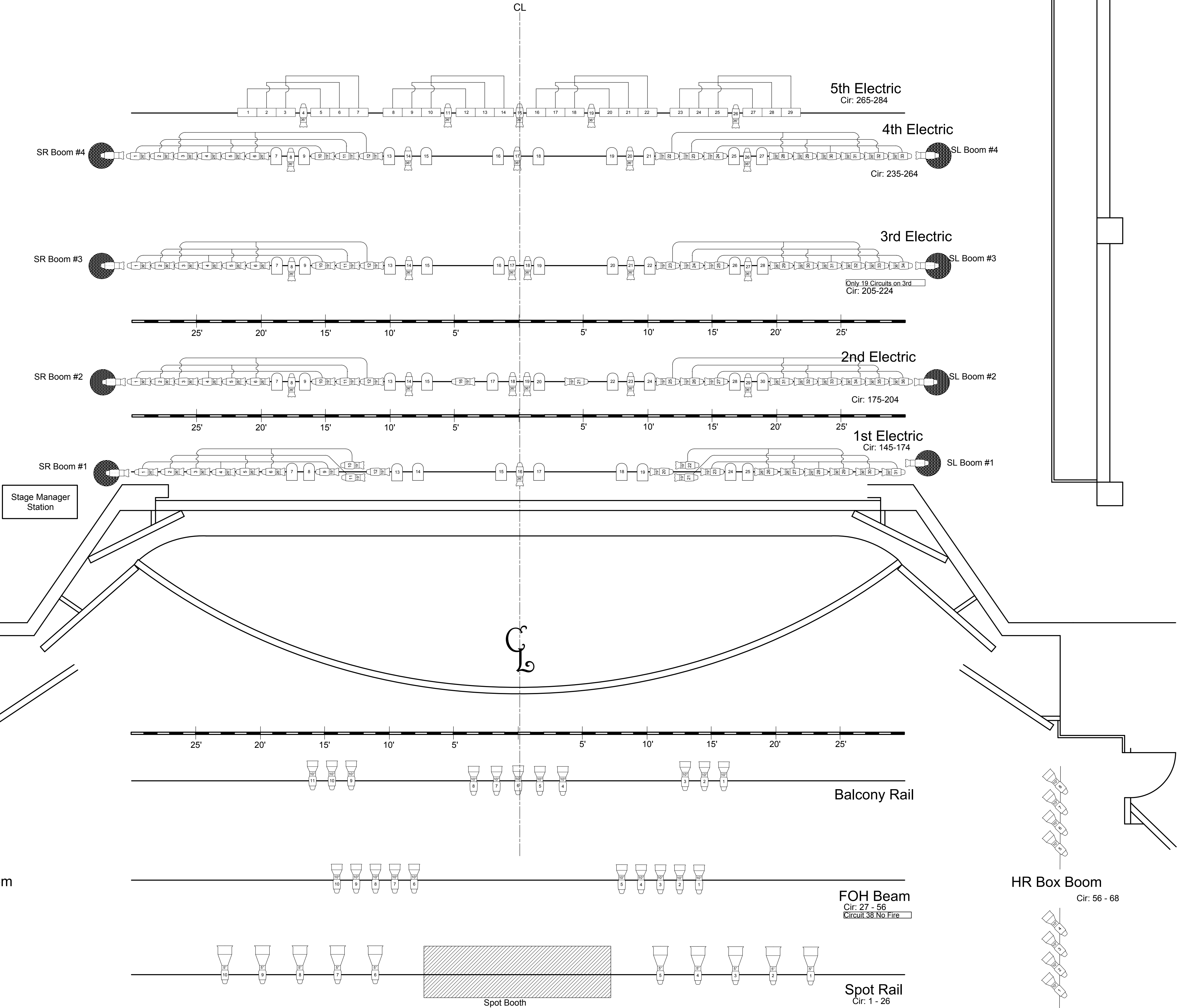
-Final Boom Placement to be Determined By Designer

-Two-fering is denoted on plot and paperwork. Other means can be discussed with designer depending on availability of actual two-fers.

-The fire curtain can move and should be trimmed to the 4th stripe down from the procs corner. It should be at its higher position before focusing FOH.

-Units 10&11, 20&21 on the first electric are roostered.

-Get fly schedule from Production Manager.



Instrument Key

- ETC Source Four 5deg 750w
- ETC Source Four 10deg 750w
- ETC Source Four 19deg 750w
- ETC Source Four 26deg 750w
- ETC Source Four 36deg 750w
- Far Cyc 3 Cell 1kw
- Colortran 8" Fresnel 2kw
- PAR 64 wFL 1kw
- Practical

Typical Unit

Template / Ins
Unit Number
Channel

Peoria Ballet Presents:

Peoria Civic Center

50th Gala

LIGHT PLOT

Lighting Designer: Rob Fulton

Scale: 1/4" = 1'0"

Date: April 2016

Plate 1 of 1